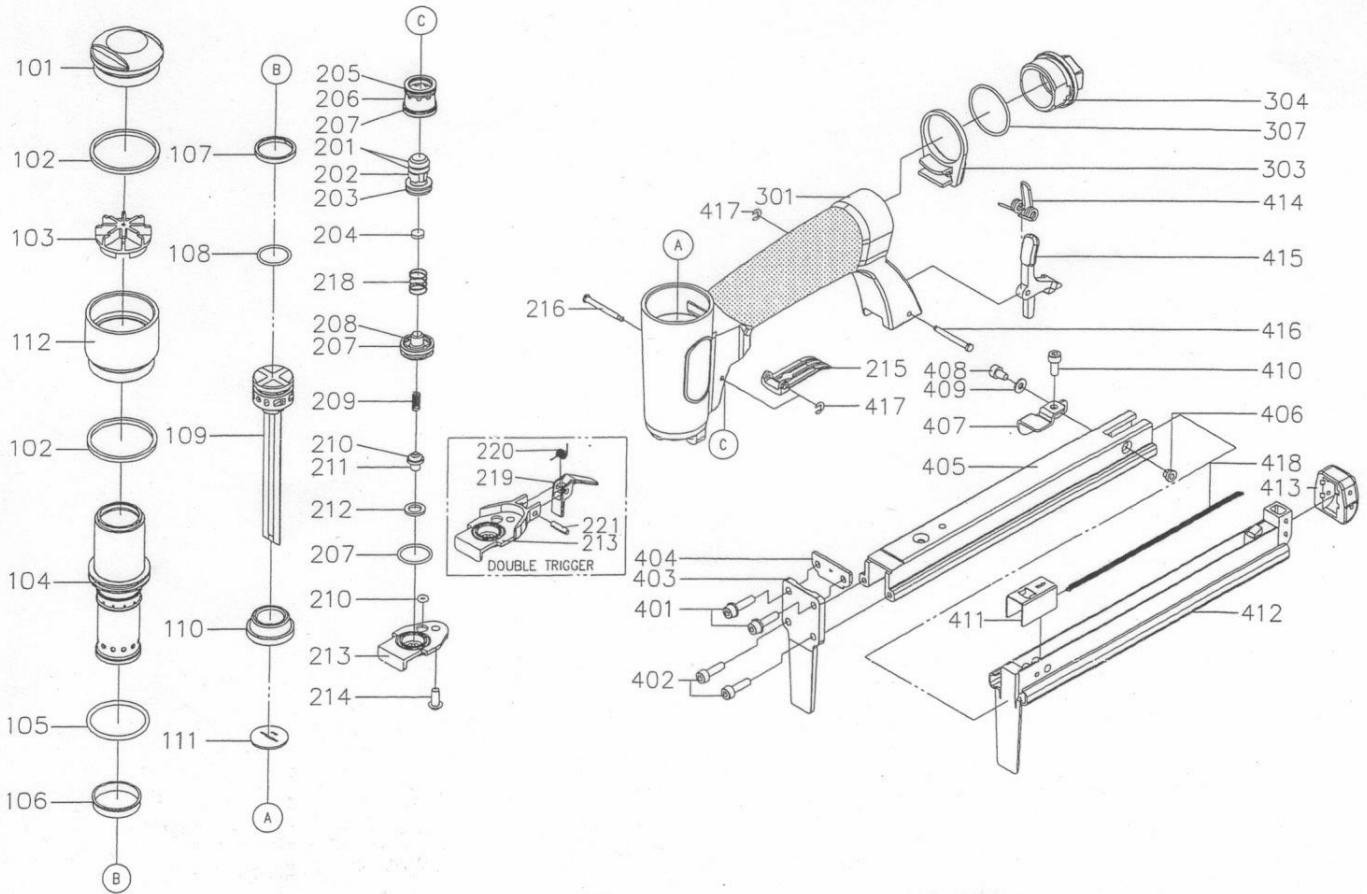


DIAGRAM OF S80/16LN-A1



ITEM NO.	PART NO.	DESCRIPTION	ITEM NO.	PART NO.	DESCRIPTION	ITEM NO.	PART NO.	DESCRIPTION
101	11371-0034703-1	DEFLECTOR	303	11394-0034701-2	GUIDE PLATE			
102	1132M-0034701-1	PACKING	304	11346-0031303-1	END CAP			
103	11370-0034701-2	SEAL	307	2041109-03050-0	O - RING			
104	11320-0040001-1	CYLINDER	401	2040100-02080-0	BOLT ASSY			
105	2041109-04070-0	O - RING	402	2040101-02070-0	HEX.SOC.HD.BOLT			
106	11322-0034701-1	CYLINDER RING	403	11351-0044702-1	DRIVER GUIDE COVER			
107	11350-0040001-1	PISTON RING	404	11380-0044701-1	GASKET			
108	2041102-02040-0	O - RING	405	11391-0044701-1	MAGAZINE B			
109	11204-0040006-1	DRIVER UNIT	406	1131F-0034701-1	ANCHOR BLOCK			
110	11327-0034701-2	BUMPER	407	11323-0044701-1	BRACKET			
111	11388-0044701-1	DRIVER GUIDE	408	2040101-02020-0	HEX.SOC.HD.BOLT			
112	1130E-0044701-1	CAP	409	2040201-02040-0	FLAT WASHER			
201	2041104-01010-0	O - RING	410	2040101-02040-0	HEX.SOC.HD.BOLT			
202	1133S-0030001-2	VALVE PLUNGER	411	11363-0044702-1	PUSHER			
203	2041102-02070-0	O - RING	412	11241-0044702-1	DRIVER GUIDE UNIT			
204	1130J-0034701-1	CUSHION	413	11390-0034701-1	PROTECTING HOOD COVER			
205	2041102-02050-0	O - RING	414	11315-0034702-1	SPRING			
206	11373-0030001-2	TRIGGER VALVE HEAD	415	11343-0034702-1	LATCH			
207	2041102-02080-0	O - RING	416	11344-0034701-1	LATCH PIN			
208	11374-0030001-1	PLUNGER CAP	417	2040302-22010-0	E - RING			
209	1133U-0014701-1	SPRING	418	11328-0030001-1	PULL SPRING			
210	2041104-01020-0	O - RING						
211	11375-0034701-1	PLUNGER						
212	11399-0033001-1	COLLAR						
213	1133T-0114701-2	PLUNGER CAP						
214	2040102-02040-0	HALF ROUND HD.HEX.BOLT						
215	11316-0034701-2	TRIGGER						
216	11318-0034701-1	TRIGGER PIVOT PIN						
218	11376-0034701-1	SPRING						
219	1136S-0044701-2	SAFETY STOPPER						
220	11315-0040001-1	SPRING						
221	2040400-05060-0	SPRING PIN						
301	11230-0034202-1	GUN BODY UNIT						