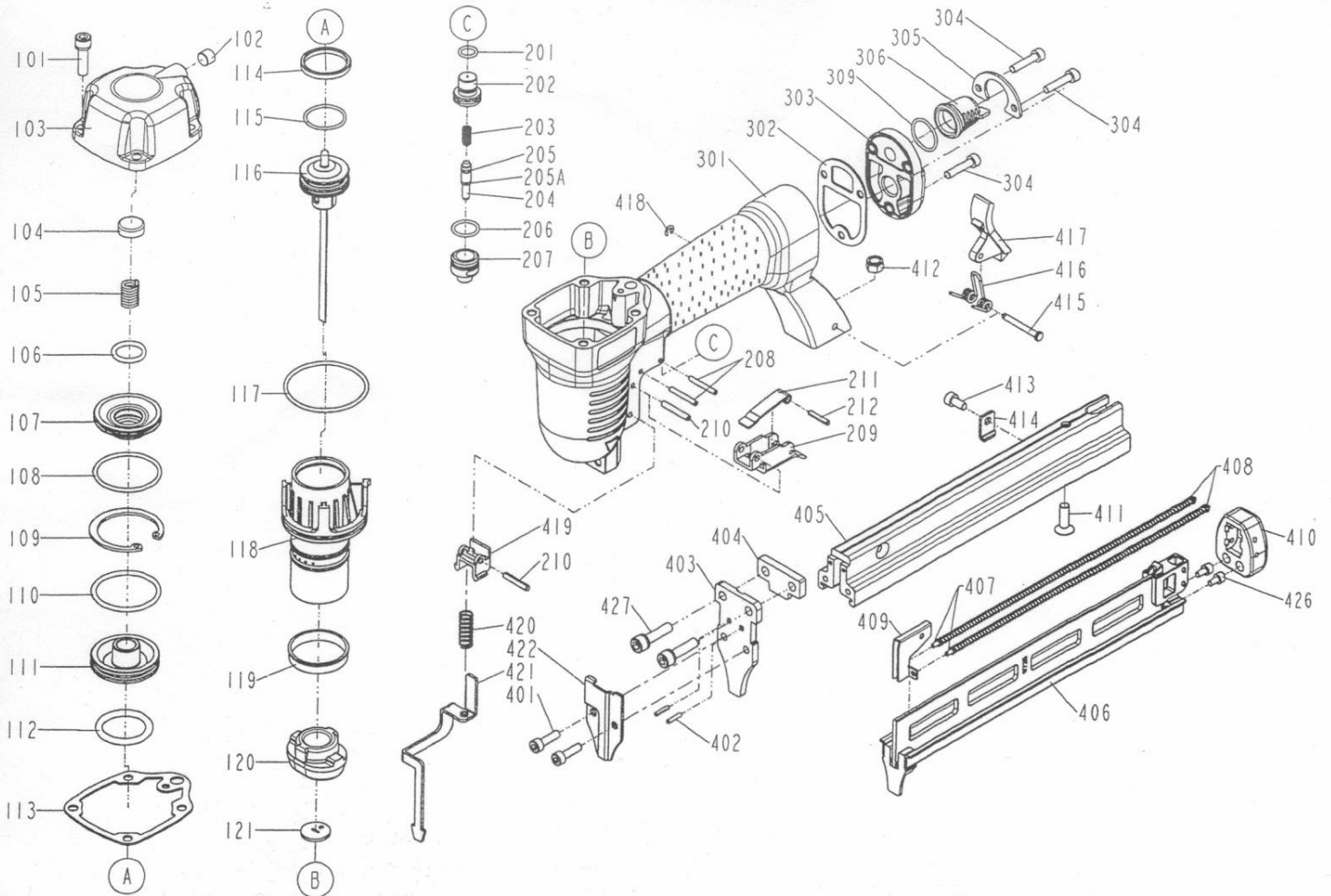


DIAGRAM OF S97/25-B1



ITEM NO.	PART NO.	DESCRIPTION	ITEM NO.	PART NO.	DESCRIPTION	ITEM NO.	PART NO.	DESCRIPTION
101	2040100-03030-0	BOLT ASSY	212	2040400-04070-0	SPRING PIN			
102	2040104-05010-0	HEX.SOC.HD.SCREW	301	11230-0314201-1	GUN BODY UNIT			
103	11369-0314301-1	CAP	302	1132H-0314701-1	GASKET			
104	11370-0010003-1	SEAL	303	11346-0314301-1	END CAP			
105	11360-0010001-3	COMPRESSION SPRING	304	2040101-02090-0	HEX.SOC.HD.BOLT			
106	2041100-02020-0	O - RING	305	11323-0314701-1	BRACKET			
107	11399-0310001-1	COLLAR	306	11394-0314701-1	GUIDE PLATE			
108	2041105-04020-0	O - RING	309	2041109-02060-0	O - RING			
109	1131C-0314701-1	RING	401	2040101-02070-0	HEX.SOC.HD.BOLT			
110	2041108-04010-0	O - RING	402	2040400-03050-0	SPRING PIN			
111	11368-0150001-1	HD.VALVE PISTON	403	11351-0454703-1	DRIVER GUIDE COVER			
112	2041108-03120-0	O - RING	404	11380-0224704-1	GASKET			
113	1132M-0314701-1	PACKING	405	11391-0454701-1	MAGAZINE B			
114	11350-0010002-1	PISTON RING	406	11241-0454701-1	DRIVER GUIDE UNIT			
115	2041105-03020-0	O - RING	407	11395-0224701-1	ROD			
116	11204-0450003-1	DRIVER UNIT	408	11367-0224702-1	PUSHER SPRING			
117	2041105-05030-0	O - RING	409	11363-0454701-1	PUSHER			
118	11320-0310001-1	CYLINDER	410	11390-0224701-1	PROTECTING HOOD COVER			
119	11322-0010001-1	CYLINDER RING	411	2040103-03040-0	COUNTER SUNK SCREW			
120	11327-0314701-1	BUMPER	412	2040500-03020-0	LOCK NUT			
121	11388-0454701-1	DRIVER GUIDE	413	2040101-02030-0	HEX.SOC.HD.BOLT			
201	2041102-01020-0	O - RING	414	11305-0314701-1	STOPPER			
202	11373-0150001-2	TRIGGER VALVE HEAD	415	11344-0034701-1	LATCH PIN			
203	1133U-0014701-1	SPRING	416	11315-0034702-1	SPRING			
204	11375-0154701-1	PLUNGER	417	11343-0314702-2	LATCH			
205	2041102-01030-0	O - RING	418	2040302-22010-0	E - RING			
205A	2041102-01031-0	O - RING	419	11338-0154701-1	SAFETY GUIDE			
206	2041109-02030-0	O - RING	420	11337-0074701-1	SAFETY SPRING			
207	11374-0154701-1	PLUNGER CAP	421	11330-0314702-1	SAFETY			
208	2040400-04100-0	SPRING PIN	422	11334-0224702-1	RELIEF PLATE			
209	11316-0154701-1	TRIGGER	426	2040101-01040-0	HEX.SOC.HD.BOLT			
210	2040400-05100-0	SPRING PIN	427	2040100-03030-2	BOLT ASSY			
211	11317-0154701-1	SECONDARY TRIGGER						