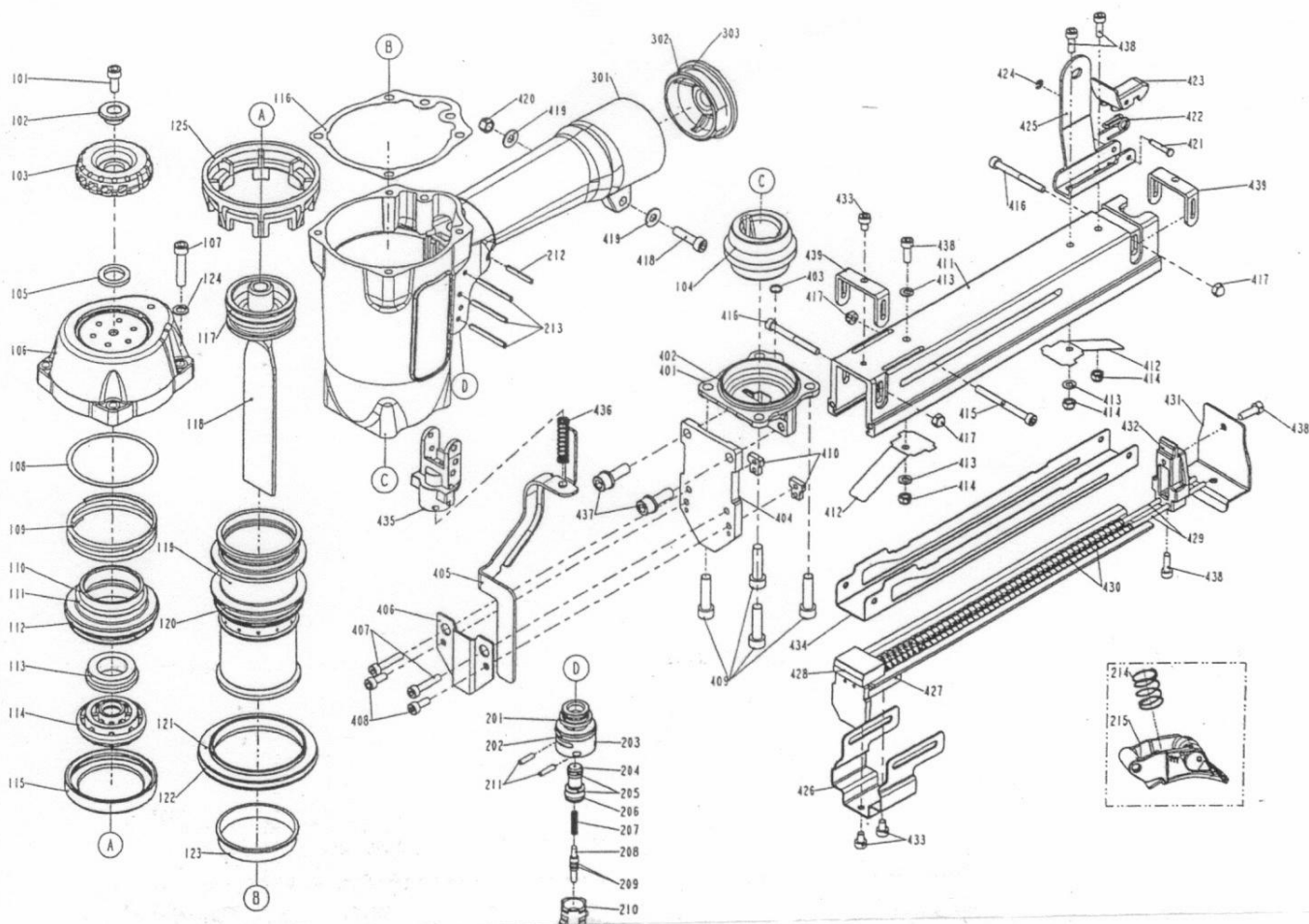


DIAGRAM OF SC25/15-A1



ITEM NO.	PART NO.	DESCRIPTION	ITEM NO.	PART NO.	DESCRIPTION	ITEM NO.	PART NO.	DESCRIPTION
101	2040101-03050-2	HEX.SOC.HD.BOLT	209	2041102-01030-0	O - RING	424	2040302-22010-0	E - RING
102	11381-0464701-1	WASHER	210	11373-0084701-1	TRIGGER VALVE HEAD	425	11323-0994701-1	BRACKET
103	11371-0784701-2	DEFLECTOR	211	2040400-05060-0	SPRING PIN	426	11341-0994701-1	STOPPER
104	11327-0994701-1	BUMPER	212	2040400-05110-0	SPRING PIN	427	11273-0994701-1	MAGAZINE UNIT
105	1135G-0460001-1	RUBBER PAD	213	2040400-05160-0	SPRING PIN	428	11363-0994701-1	PUSHER
106	11369-0074306-2	CAP	214	11376-0370001-1	SPRING	429	11395-0994701-1	ROD
107	2040101-03110-0	HEX.SOC.HD.BOLT	215	11224-0764701-1	TRIGGER UNIT	430	11367-0994701-1	PUSHER SPRING
108	11381-0760001-1	WASHER	301	11230-0764202-1	GUN BODY UNIT	431	11347-0994701-1	REAR PLATE
109	11360-0760002-1	COMPRESSION SPRING	302	11346-0081301-1	END CAP	432	11342-0994701-1	STOPPER
110	11368-0760002-1	HD.VALVE PISTON	303	2041109-05050-0	O - RING	433	2040101-02020-2	HEX.SOC.HD.BOLT
111	2041104-05050-0	O - RING	401	11326-0994701-1	BASE	434	11305-0990001-1	STOPPER
112	2041101-06020-0	O - RING	402	2041104-05020-0	O - RING	435	11338-0764701-1	SAFETY GUIDE
113	1133M-0760001-1	SEAL GASKET	403	2041109-01060-0	O - RING	436	11337-0994701-1	SAFETY SPRING
114	11370-0760002-1	SEAL	404	11351-0994701-1	DRIVER GUIDE COVER	437	2040100-04010-2	BOLT ASSY
115	11399-0760003-1	COLLAR	405	11331-0994701-1	SAFETY A	438	2040101-02060-0	HEX.SOC.HD.BOLT
116	1132M-0764701-1	PACKING	406	11334-0994701-1	RELIEF PLATE	439	1130T-0994701-1	STOPPER
117	2041104-04102-0	O - RING	407	2040101-02100-2	HEX.SOC.HD.BOLT			
118	11204-0990001-1	DRIVER UNIT	408	2040101-02040-2	HEX.SOC.HD.BOLT			
119	11320-1000001-2	CYLINDER	409	2040101-04090-2	HEX.SOC.HD.BOLT			
120	2041108-05040-0	O - RING	410	1131J-0994701-1	POSITIONING SHEET			
121	11321-0070002-1	CYLINDER SPACER	411	11391-0994701-1	MAGAZINE B			
122	2041108-07020-0	O - RING	412	1134K-0990001-1	SPRING			
123	11322-0250001-1	CYLINDER RING	413	2040201-02020-0	FLAT WASHER			
124	2040201-03010-0	FLAT WASHER	414	2040500-02010-0	LOCK NUT			
125	1131E-0764701-2	CYLINDER PRESS RING	415	2040101-02191-2	HEX.SOC.HD.BOLT			
201	2041104-02020-0	O - RING	416	2040101-02201-2	HEX.SOC.HD.BOLT			
202	2041104-02030-0	O - RING	417	2040505-02010-0	UNT			
203	11374-0084701-1	PLUNGER CAP	418	2040101-03090-0	HEX.SOC.HD.BOLT			
204	1133S-0250001-1	VALVE PLUNGER	419	2040201-03020-0	FLAT WASHER			
205	2041100-01070-0	O - RING	420	2040500-03020-0	LOCK NUT			
206	2041100-01030-0	O - RING	421	11344-0024701-1	LATCH PIN			
207	11376-0254701-1	SPRING	422	11315-0084701-1	SPRING			
208	11375-0084701-1	PLUNGER	423	11343-0084702-2	LATCH			