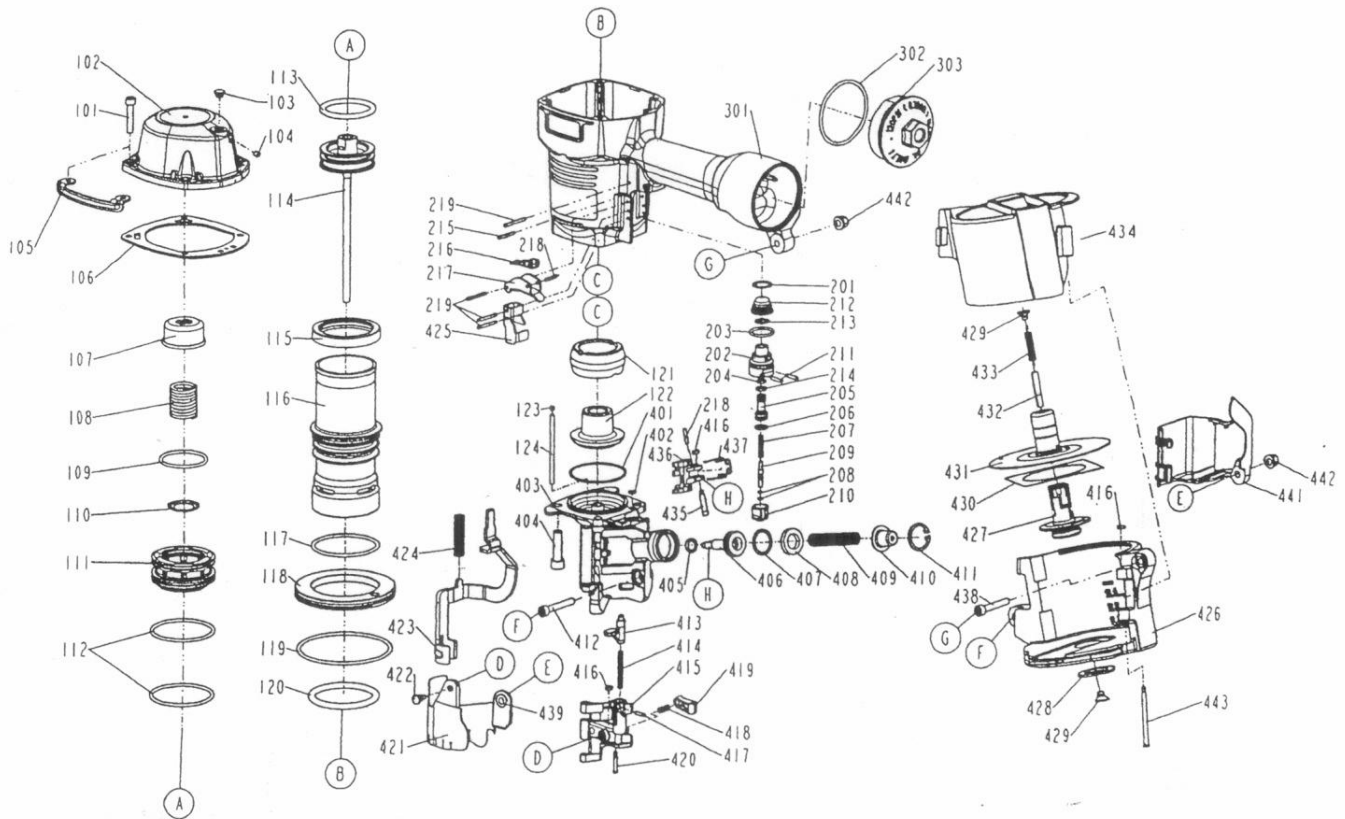


DIAGRAM OF C29/70-A1



ITEM NO.	PART NO.	DESCRIPTION	ITEM NO.	PART NO.	DESCRIPTION	ITEM NO.	PART NO.	DESCRIPTION
101	2040101-04111-0	HEX.SOC.HD.BOLT	210	11373-0860001-1	TRIGGER VALVE HEAD	421	11383-0860001-1	MUZZLE PROTECTOR
102	11369-0864301-1	CAP	211	11329-0860001-1	PIN	422	1134B-0864701-1	DUST SHIELD PLUG
103	1135S-0350001-1	GROMMET	212	1137A-0860001-1	COVER-PLUNGER	423	11330-0864701-2	SAFETY
104	2040104-03010-0	HEX.SOC.HD.SCREW	213	2041104-02070-0	O - RING	424	11337-0864701-1	SAFETY SPRING
105	11397-0864701-1	GUIDE COVER	214	2041100-01050-0	O - RING	425	11338-0864701-1	SAFETY GUIDE
106	11302-0864701-1	CYLINDER CAP SEAL	215	2040401-05100-0	SPIRAL PINS	426	11354-0864701-3	MAGAZINE CASE
107	11370-0860001-1	SEAL	216	11317-0864701-1	SECONDARY TRIGGER	427	11357-0860001-3	MAGAEING POST
108	11360-0354701-3	COMPRESSION SPRING	217	11316-0864701-2	TRIGGER	428	1138Y-0864701-1	RUBBER RING
109	2041108-05070-0	O - RING	218	2040400-05080-0	SPRING PIN	429	1134M-0864701-1	SPRING BASE
110	11381-0864701-1	WASHER	219	2040401-05120-0	SPIRAL PINS	430	1138X-0860001-1	RUBBER PLATE
111	11368-0860001-2	HD.VALVE PISTON	301	11230-0864201-1	GUN BODY UNIT	431	11356-0864701-1	SPACER
112	2041108-06050-0	O - RING	302	2041101-05020-0	O - RING	432	1138W-0860001-1	SPACER
113	2041108-05060-0	O - RING	303	11346-0861301-1	END CAP	433	11328-0860001-1	PULL SPRING
114	11204-0860001-3	DRIVER UNIT	401	2041108-06060-0	O - RING	434	11355-0864703-1	MAGAZINE COVER
115	11399-0860001-1	COLLAR	402	2041108-01010-0	O - RING	435	11365-0864701-1	PIN FEED PISTON
116	11320-0860001-1	CYLINDER	403	11382-0864701-1	NOSE PIECE	436	11306-0864701-1	FEED FINGER
117	2041108-06010-0	O - RING	404	2040101-05040-2	HEX.SOC.HD.BOLT	437	11307-0864701-1	FEED FINGER SPRING
118	11321-0860001-1	CYLINDER SPACER	405	2041100-01091-0	O - RING	438	2040101-04121-0	HEX.SOC.HD.BOLT
119	2041101-09020-0	O - RING	406	11364-0864701-1	FEED PISTON	439	1135U-1010001-1	PROTECTOR WASHER
120	2041100-06010-0	O - RING	407	2041100-03051-0	O - RING	441	1134R-0864701-1	SPRING COVER
121	11327-0864701-1	BUMPER-A	408	1134W-0860001-1	FEED BUMPER	442	2040501-04010-0	BOLT CAP
122	11327-0864702-1	BUMPER-B	409	11367-0860001-1	PUSHER SPRING	443	1136R-0864701-1	MAGAZINE SHAFT PIN
123	1135S-0860001-1	GROMMET A	410	11366-0864701-1	FEED PISTON CAP			
124	11362-0864701-1	DOOR SHAFT PIN	411	2040300-02010-0	C - RING			
201	2041104-02060-0	O - RING	412	2040101-04131-0	HEX.SOC.HD.BOLT			
202	11374-0860001-1	PLUNGER CAP	413	11310-0864701-1	DOOR LATCH			
203	2041100-02050-0	O - RING	414	11311-0860001-1	LATCH SPRING			
204	2041100-01070-0	O - RING	415	11361-0864701-1	DOOR			
205	1133S-0860001-1	VALVE PLUNGER	416	1135H-0860001-1	PU RETAINER			
206	2041100-01030-0	O - RING	417	2040400-05060-0	SPRING PIN			
207	11376-0860001-1	SPRING	418	1133C-0860001-1	STOPPER FINGER SPRING			
208	2041108-01020-0	O - RING	419	11358-0864701-1	NAIL STOP			
209	11375-0860002-1	PLUNGER	420	11359-0864701-1	PIN-NAIL STOP			