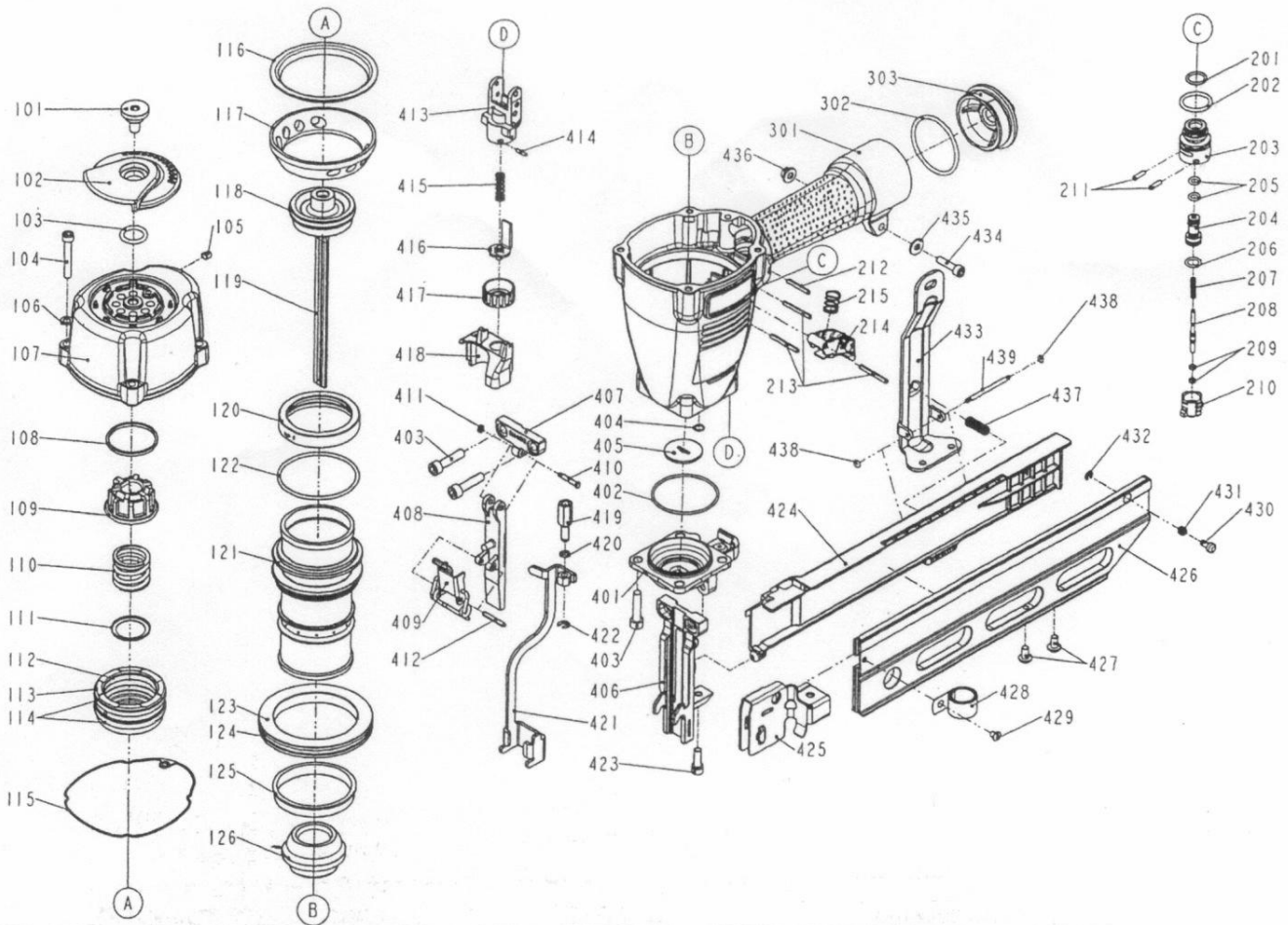


DIAGRAM OF S15/865-A1



ITEM NO.	PART NO.	DESCRIPTION	ITEM NO.	PART NO.	DESCRIPTION	ITEM NO.	PART NO.	DESCRIPTION
101	1136B-0374702-1	DEFLECTOR PAD	208	11375-0084701-1	PLUNGER	423	2040100-03010-2	BOLT ASSY
102	11371-0374704-1	DEFLECTOR	209	2041102-01030-0	O - RING	424	11348-0070001-2	MOUNTING BRACKET
103	2041106-02010-0	O - RING	210	11373-0084701-1	TRIGGER VALVE HEAD	425	11363-1174701-1	PUSHER
104	2040101-03200-0	HEX.SOC.HD.BOLT	211	2040400-05060-0	SPRING PIN	426	11389-1174701-1	MAGAZINE A
105	2040104-03010-0	HEX.SOC.HD.SCREW	212	2040400-05110-0	SPRING PIN	427	2040102-03020-2	HALF ROUND HD.HEX.BOLT
106	2040201-03030-0	FLAT WASHER	213	2040400-05160-0	SPRING PIN	428	11372-0980001-1	SPRING
107	11369-0984301-1	CAP	214	11224-0764701-1	TRIGGER UNIT	429	1131H-0074701-1	SPECIAL SCREW
108	11381-0950001-1	WASHER SEAL	215	11376-0370001-1	SPRING	430	11310-0074701-1	DOOR LATCH
109	11370-0950001-1	SEAL	301	11230-1094201-1	GUN BODY UNIT	431	11311-0074701-1	LATCH SPRING
110	11360-1010001-1	COMPRESSION SPRING	302	2041109-05050-0	O - RING	432	2040302-23010-0	E - RING
111	11381-0950002-1	WASHER	303	11346-0081301-1	END CAP	433	11323-1174701-1	POSITIONING SHEET
112	2041108-05070-0	O - RING	401	11326-0984701-1	BASE	434	2040101-03100-0	HEX.SOC.HD.BOLT
113	11368-1010001-1	HD.VALVE PISTON	402	2041104-05020-0	O - RING	435	2040202-03010-0	FLAT WASHER
114	2041104-06050-0	O - RING	403	2040101-04090-2	HEX.SOC.HD.BOLT	436	2040501-03040-0	BOLT CAP
115	1132M-1094701-1	PACKING	404	2041109-01060-0	O - RING	437	11337-0074701-1	SAFETY SPRING
116	1136D-0984701-1	PRESS RING	405	11388-1174701-1	DRIVER GUIDE	438	2041109-01010-0	O - RING
117	1131E-0084701-2	CYLINDER PRESS RING	406	11303-1174701-1	DRIVER GUIDE	439	1135N-0074701-1	HINGE POINT
118	2041100-05062-0	O - RING	407	11353-1174701-1	DRIVER GUIDE COVER B			
119	11204-1174701-1	DRIVER UNIT	408	11352-1174701-1	DRIVER GUIDE COVER A			
120	11399-1014701-1	COLLAR	409	11244-0074701-1	LOCK HANDLE UNIT			
121	11320-1050001-1	CYLINDER	410	1130U-0254701-2	FEED FINGER PLUG			
122	2041109-06020-0	O - RING	411	1135H-0790001-1	PU RETAINER			
123	11321-0080006-1	CYLINDER SPACER	412	2040401-05110-0	SPIRAL PINS			
124	2041104-08010-0	O - RING	413	11338-0764701-1	SAFETY GUIDE			
125	11322-0764701-1	CYLINDER RING	414	2040400-04050-0	SPRING PIN			
126	11327-0764702-1	BUMPER	415	11337-0084701-1	SAFETY SPRING			
201	2041104-02020-0	O - RING	416	11256-0764702-2	SAFETY B UNIT			
202	2041104-02030-0	O - RING	417	11393-0761101-1	ADJUST AXIE			
203	11374-0084701-1	PLUNGER CAP	418	1137A-0764701-1	COVER-SAFETY			
204	1133S-0250001-1	VALVE PLUNGER	419	11393-0764701-1	ADJUST ROD			
205	2041100-01070-0	O - RING	420	2041102-01050-0	O - RING			
206	2041100-01030-0	O - RING	421	11330-1174701-1	SAFETY			
207	11376-0254701-1	SPRING	422	2040302-24010-0	E - RING			